



MG Mounting Frame Operating Manual V1.2

CONTENTS

Chapter 1 Features	01
Chapter 2 Mounting frame components and installation methods ...	01
2.1 Components	01
2.2 Base assembling	02
2.3 MG Mounting frame unit composition diagram	03
2.4 How to set up the MG mounting frame	04
Chapter 3 How to set up the MG cabinets to the MG Mounting frame Supplementary Instruction	06
Chapter 4 Supplementary instruction	08

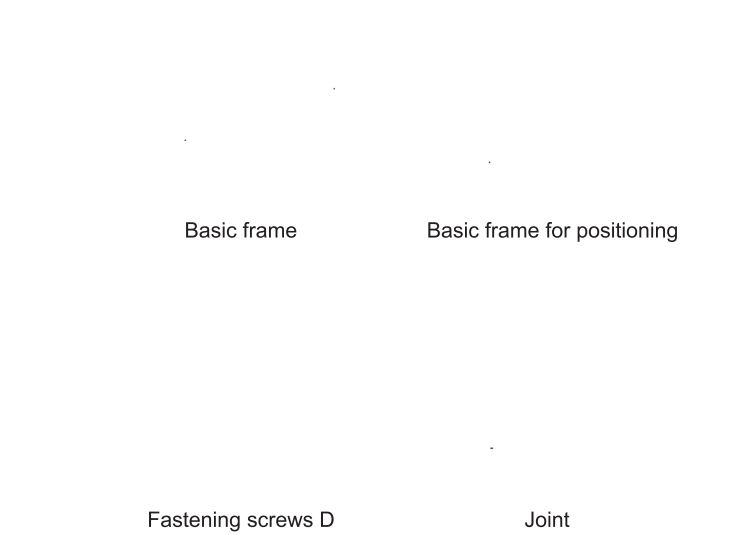
Chapter 1 Features

MG mounting frame adopt high strength aluminum alloy material , light , strong and corrosion resistant. The surface is stain-poof and pretty through special treatment. With standardized composite structure as unit design , it has the features of flexible , easy installation and wide range applications etc . It is perfectly matching with our Magic Stage series LED display , could realize all kinds of installations easily.

Chapter 2 Mounting frame components and installation methods

2.1 Components

MG mounting frame , at the basis of one unit , quantity of components : Bottom base 1 pc , Extension frame(1) 1 pc , Extension frame(2) 1 pc , Basic frame 7 pcs , Joint 8 pcs , Bottom beam components A(1 meter) 1 pc , Fastening screw D 14 pcs , Basic frame for positioning(90mm shorter than regular basic frame) 3 pcs , Basic frame for positioning is the last unit of horizontal basic frame, it can perfectly solve the difficulty of installing the U-shaped buckle edge .



Base Components

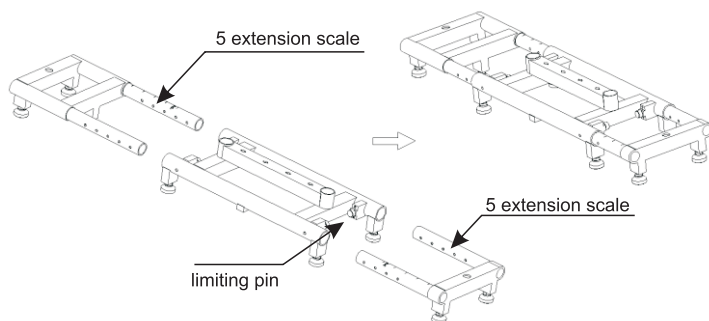
Extension frame-1

Extension frame-2

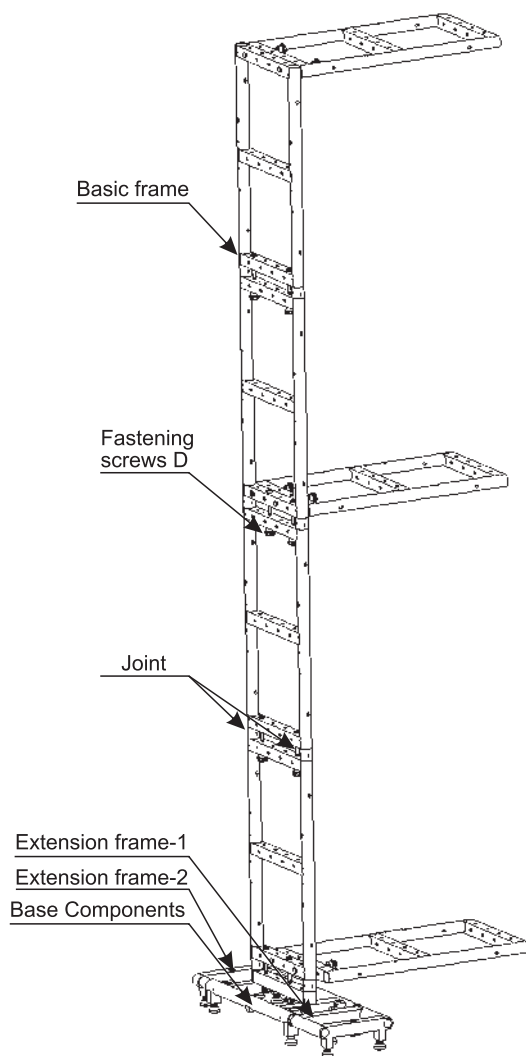
Bottom beam Components A(1m)

2.2 Base Installation

Insert the extension frame-1 and the extension frame-2 into the base mounting hole , insert into the appropriate position (Reference extension scale) . Rotate 90 degree of the limiting pin on the base , ensure that the limiting pin insert into the extension limiting hole, when the extension is extended to the last scale, the limiting pin must be inserted. It is strictly forbidden to extend the extension beyond the last scale.



2.3 MG Mounting frame unit composition diagram

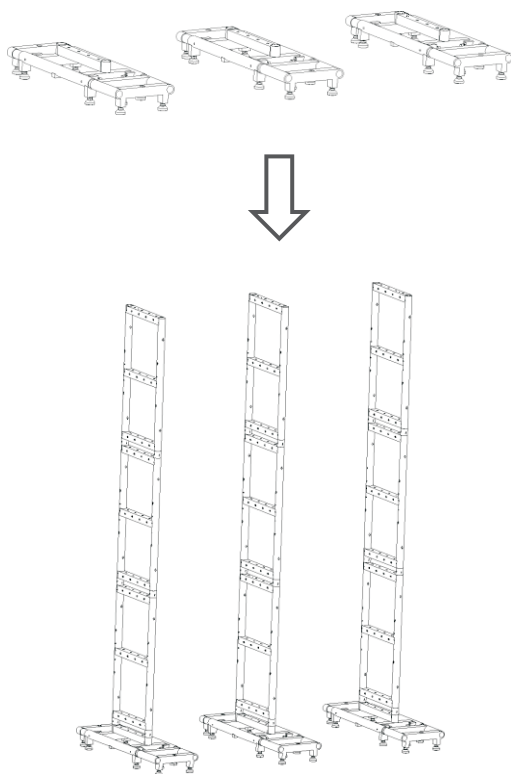


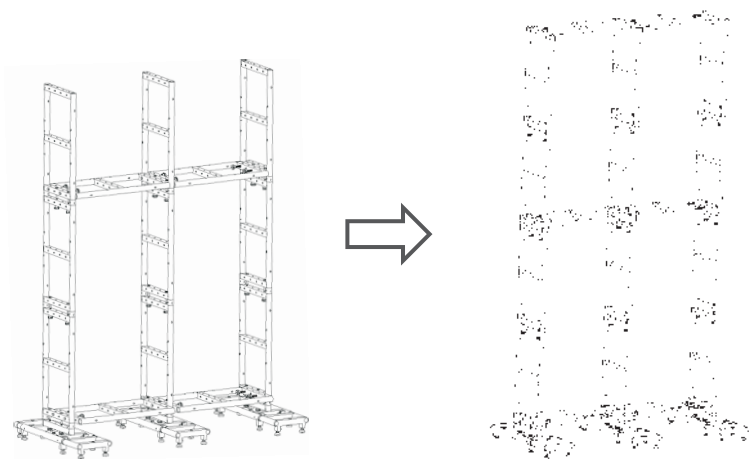
MG Mounting frame unit

2.4 How to set up the MG mounting frame

For example, steps to set up a mounting frame for a 2m(W) x 4m(H) screen:

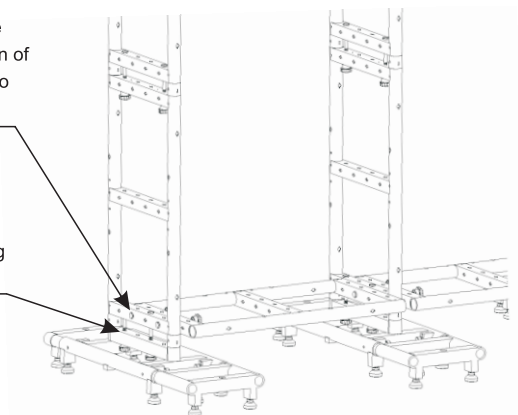
- 1) Assemble 3 base sets according to 2.2, place horizontally on the ground.
- 2) Arrows on joints down, insert the joints to the bases, then connect the basic frame, lock with the fastening screws.
- 3) Assemble the horizontal basic frame. Shift the basic frame one hole aside to the direction of Extension 1, lock with the mounting screws. Connect the middle horizontal basic frame with the vertical basic frame, lock with the fastening screws.
- 4) Connect the top horizontal basic frame with the vertical basic frame. Lock with the fastening screws.





Shift the basic frame one hole aside to the direction of Extension 1, lock with two fastening screws

Lock the vertical basic frame with two fastening screws



Assembling details of the base and the basic frame

Chapter 3

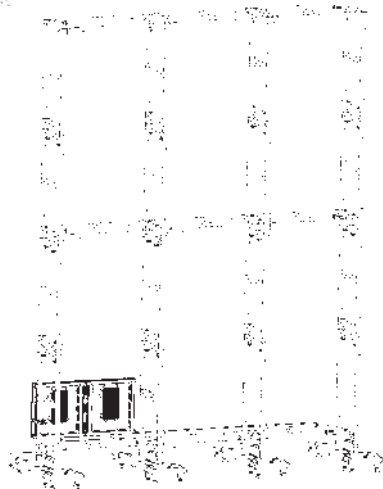
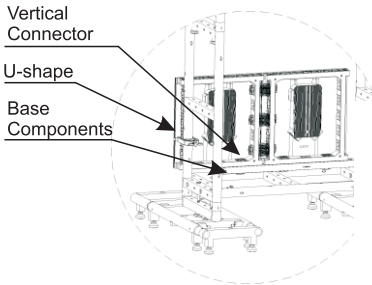
How to set up the MG cabinets to the MG Mounting frame

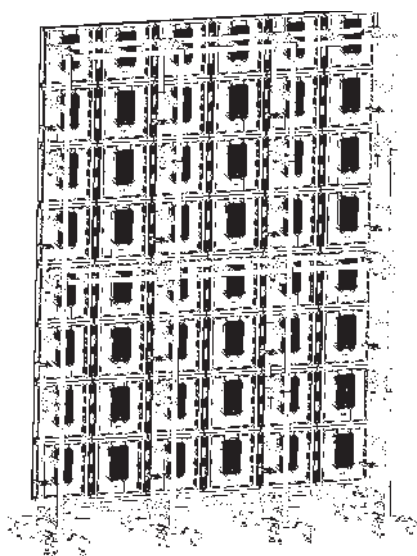
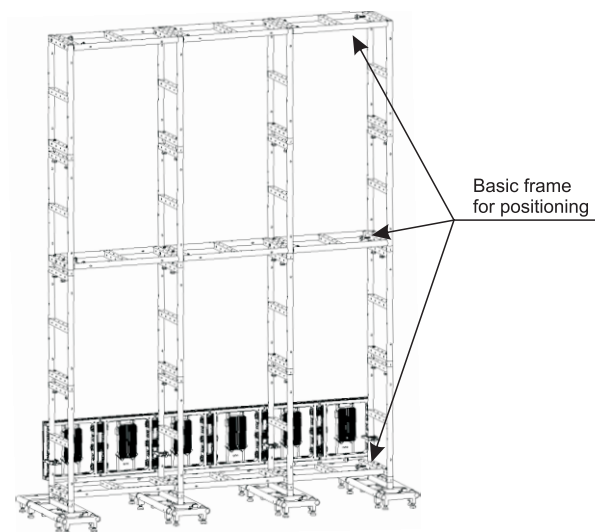
3.1 Put the bottom base on the basic frame, adjust the foot of the base according to the gradienter to let it be evenly. Put the MG cabinet on the bottom base, lock the cabinet to the bottom base with vertical connectors, adjust the cabinet to the suitable place, lock the cabinet to the basic frame with the fixing connector.

3.2 Put the second cabinet on the bottom beam, lock the second cabinet to the first cabinet with the horizontal connectors, and lock the second cabinet to the second bottom beam. Assemble the rest cabinets of the first row accordingly.

3.3 Assemble the second row take two cabinets as a group. Lock the cabinets with the vertical and horizontal connectors.

3.4 Assemble the rest cabinets according to 3.3. Note the fixing connectors should be used every 1 meter(crosswise and vertical).





Chapter 4 Supplementary instruction

4.1 Operation Instructions of MG series cabinets.

4.2 Packing methods of the MG mounting frame. Every component will be packed individually by EPE, then be packed by dedicated cartons before delivery.



eqcgrupo.com



Social



C/ Calibre 55, 28400 Collado Villalba, Madrid

Tel: (+34) 91 850 50 87 / (+34) 667 67 86 54

Web: <https://eqcgrupo.com>

E-mail: info@eqcgrupo.com