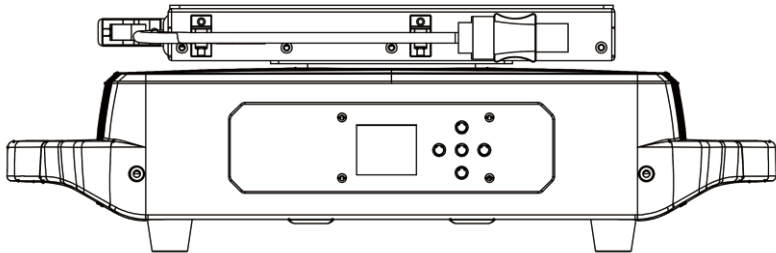
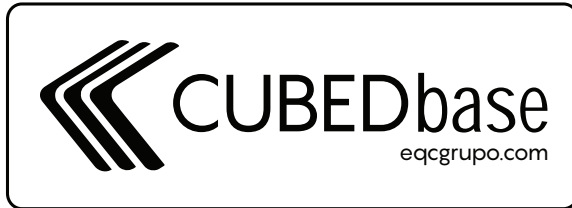


eqc
grupo
extreme quality control



CE ∇ \oplus IP20 t_a 40°C t_c 100°C

User Manual

KEEP THIS MANUAL FOR FUTURE NEEDS

1 SAFETY INSTRUCTIONS



CAUTION

Becareful with your operations. With a dangerous voltage you cansuffer a dangerous electric shock when touching wires!

This device has left the factory in perfect condition. In order to maintain this condition and to ensure a safe operation, it is absolutely necessary for the user to follow the safety instructions and warning notes written in this user manual.



IMPORTANT

Damages caused by the disregard of this user manual are not subject to warranty. The dealer will not accept liability for any resulting defects or problems.

If the device has been exposed to temperature changes due to environmental changes, do not switch it on immediately. The arising condensation could damage the device. Leave the device switched off until it has reached room temperature.

This device falls under protection-class I. Therefore it is essential that the device be earthed.

The electric connection must carry out by qualified person.

The device shall only be used with rate voltage and frequency.

Make sure that the available voltage is not higher than stated at the end of this manual.

Make sure the power cord is never crimped or damaged by sharp edges. If this would be the case, replacement of the cable must be done by an authorized dealer.

Always disconnect from the mains, when the device is not in use or before cleaning it. Only handle the power cord by the plug. Never pull out the plug by tugging the power cord.

During initial start-up some smoke or smell may arise. This is a normal process and does not necessarily mean that the device is defective, it should decrease gradually.

Please don't project the beam onto combustible substances.

Fixtures cannot be installed on combustible substances, keep more than 50cm distance with wall for smooth air flow, so there should be no shelter for fans and ventilation for heat radiation.

If the external flexible cable or cord of this luminaire is damaged, it shall be exclusively replaced by the manufacturer or his service agent or a similar qualified person in order to avoid a hazard.

2 UNPACKING

The CUBEDBASE is a dynamic solution designed to be an optional system kit for the CRAYZBAR series fixtures. It's an innovative moving head base that allows you to install a non-moving head fixture on it and turn the fixtures to be a complete moving head light to get dynamic effects.

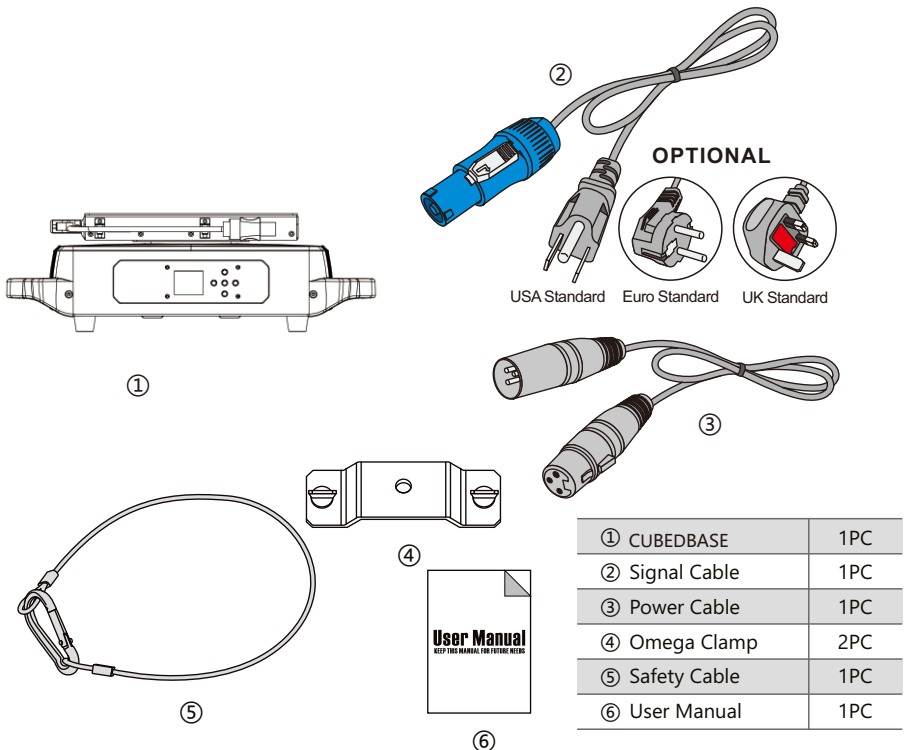
You could mount the CUBED products horizontally or vertically on the CUBEDBASE. Suggested as following options:

Horizontally:
CUBED860/660

Vertically:
CUBED860

The CUBEDBASE offers smooth continuous PAN movement with various speeds. The unit could spin up to 50 RPM. It could load a fixture with 50KG less weight. It's with very SMART power system and DMX system for the BASE itself and the mounted fixtures on it. So there are no concerns of tangled power or DMX cables when using the continuous PAN system.

Overall, the CUBEDBASE 1 is a super flexible system to bring unique features to the CUBEDBASE series, which help the users to get much more lighting benefit. And, it's also available to mount other brands' static/non-moving fixtures on CUBEDBASE and make them to moving lights (some extra accessories need to be made accordingly).



3 FEATURES & SPECIFICATIONS

PAN: 2 modes

1. 360° Continuous movement

2. 540° (8/16 bit)

Fast, quiet, smooth and precise 2-phase motors

Smooth, fast and precise resolution for movement with low noise operation

Scan position memory, auto reposition after unexpected movement

50KG Max mounted weight

50RPM Max rotation speed

5 DMX channels USITT DMX-512

DMX512, master-slave, sound activated or auto operation

DMX recorder and edit function integrated

RDM available (Remote Device Management)

Shielded input signal protection for stable signal without interference

3-Pin XLR connectors IN/OUT (for the base)

3-Pin XLR connector OUT (for the mounted lights)

1.44" TFT LCD display

English/Chinese menu

5 Control buttons

180° Reversible for LCD display

Display auto OFF

Advanced self-adjusting fan cooling system

Constant temperature readout and management function

Over temperature protection management

Electronic supply with active PFC

AC100-240V 50/60Hz

PowerCON IN/OUT with fuse (for the base)

PowerCON OUT (for the mounted lights)

16W Power consumption(CB1)

Max power consumption: 220VA

Mains out: 2300VA@230V; 1250VA@110V

-25°C to 45°C ambient temperature

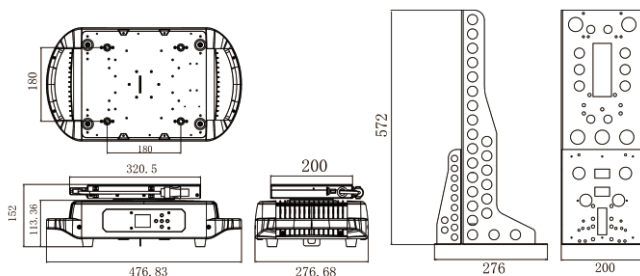
IP20 protection rating

N.W.: 10kg

G.W.: 12kg

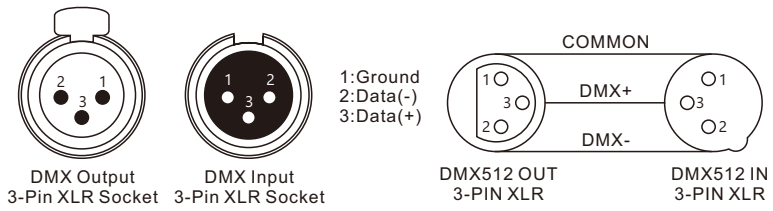
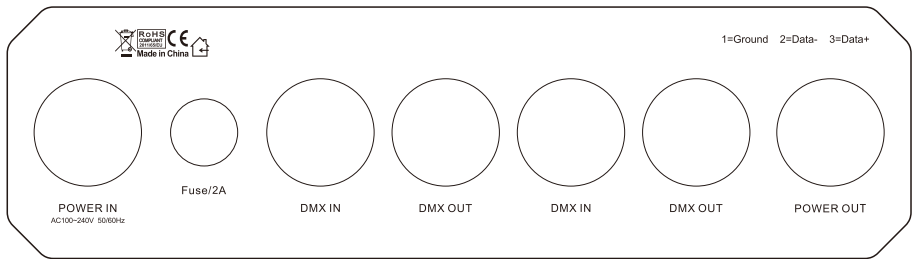
Product Dimensions: 276.68(D)*476.83(W)*152(H)mm

Packing Dimensions: 330(D)*530(W)*210(H)mm

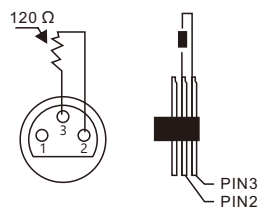


4 DMX-512 CONTROL CONNECTIONS

Connect the provided XLR cable to the female 3-pin XLR output of your controller and the other side to the male 3-pin XLR input of the moving head. You can chain multiple Moving head together through serial linking. The cable needed should be two core, screened cable with XLR input and output connectors. Please refer to the diagram below. DMX-512 connection with DMX terminator



For installations where the DMX cable has to run a long distance or is in an electrically noisy environment, such as in a discotheque, it is recommended to use a DMX terminator. This helps in preventing corruption of the digital control signal by electrical noise. The DMX terminator is simply an XLR plug with a 120 Ω resistor connected between pins 2 and 3, which is then plugged into the output XLR socket of the last fixture in the chain. Please see illustrations below.



5 MENU OPERATIONS

Main Menu	Second	Third	Fourth	
Dmx Address	000 - 512			
Fixture	Dmx Mode	STD		
	Run Mode	DMX / Host		
	Pan Invert	Close / Open		
	No Dmx Signal	Clear / Hold		
Manual	Pan	000 - 255		
	Pan Fine	000 - 255		
	PTSpeed	000 - 255		
	PanRo	000 - 255		
	Reset	000 - 255		
Information	Time	Current Time	xxxH	
		Total Time	xxxH	
	Sensor	All Sensor are ok!		
Software Version	Panel	Vx.xx		
Factory	Password	000 - 255		
	Pan	000 - 255		
Fixture Reset	Motor Reset	Cance / Run		
	Factory	Cance / Run		
Display	Language	CH / EN		
	Display Flip	Normal / Reverse		
	Display Mode	60s / Show		

6 ***DMX CHANNELS***

5CH	Function	Dmx Value	Description
1	PAN	000 - 255	0-540° PAN movement
2	PAN FINE	000 - 255	Fine control of PAN movement
3	SPEED	000 - 255	Speed control of PAN movement, fast to slow
4	PAN ROTATION	000 - 003	No Function
		004 - 129	Forward rotation from fast to slow
		130 - 255	Backward rotation from slow to fast
5	RESET	000 - 250	No Function
		251 - 255	Complete Reset in 3s

7 MAINTENANCE AND CLEANING

The following points have to be considered during the inspection:

- 1) All screws for installing the devices or parts of the device have to be tightly connected and must not be corroded.
- 2) There must not be any deformations on the housing, color lenses, fixations and installation spots (ceiling, suspension, trussing).
- 3) Mechanically moved parts must not show any traces of wearing and must not rotate with unbalances.
- 4) The electric power supply cables must not show any damage, material fatigue or sediments.

Further instructions depending on the installation spot and usage have to be adhered by a skilled installer and any safety problems have to be removed.



CAUTION

Disconnect from mains before starting maintenance operation.



In order to make the lights in good condition and extend the life time, we suggest a regular cleaning to the lights.

- 1) Clean the inside and outside lens each week to avoid the weakness of the lights due to accumulation of dust.
- 2) Clean the fan each week.
- 3) A detailed electric check by approved electrical engineer each three month, make sure that the circuit contacts are in good condition, prevent the poor contact of circuit from overheating.

We recommend a frequent cleaning of the device. Please use a moist, lint- free cloth. Never use alcohol or solvents.

There are no serviceable parts inside the device. Please refer to the instructions under "Installation instructions".

Should you need any spare parts, please order genuine parts from your local dealer.